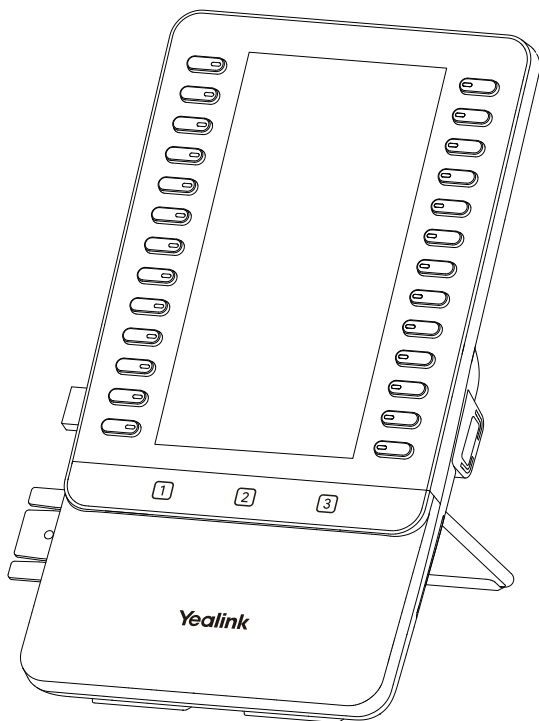




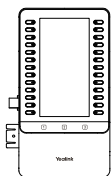
## Color-Screen Expansion Module EXP55 for Yealink SIP-T7x/T8x Series IP Phones



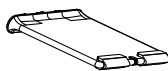
### Quick Start Guide

## Package Contents

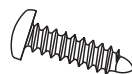
The following items are included in your package. If you find anything missing, contact your system administrator.



Color-Screen  
Expansion Module



Stand



Screw



Screwdriver

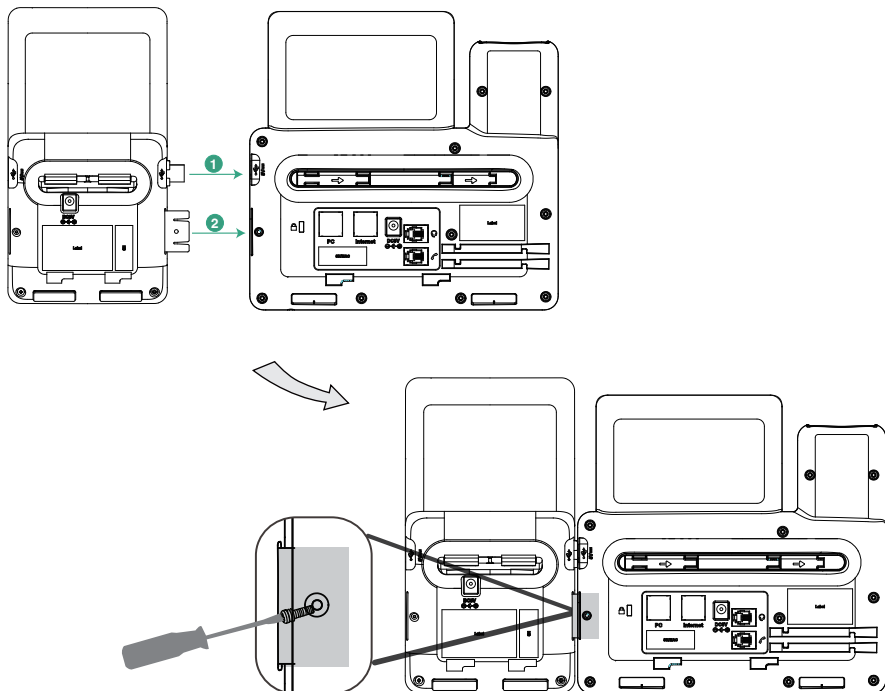


Quick Start Guide

## Connecting to the Phone

**Connect the EXP55 and the phone using the supplied screw, as shown below:**

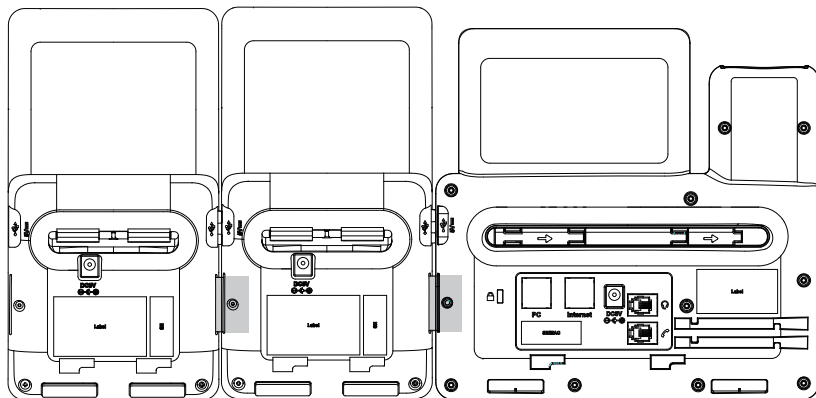
1. Insert the USB-A port of the EXP55 to the phone.
2. Use the screw to connect the EXP55 to the phone.



## Connecting two Expansion Modules

**Follow the same steps as above to connect the two expansion modules:**

1. Insert the USB-A port of the second EXP55 to the first EXP55.
2. Use the screw to connect the second EXP55 to the first EXP55.

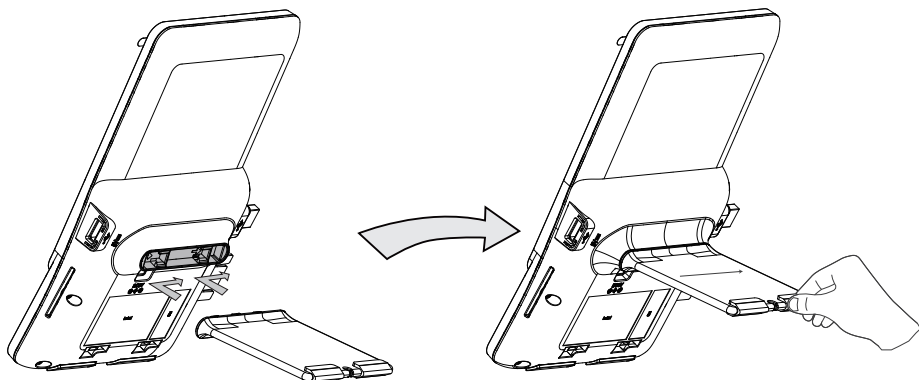


**Note:** The T7x/T8x phone can support 3 expansion modules at most.

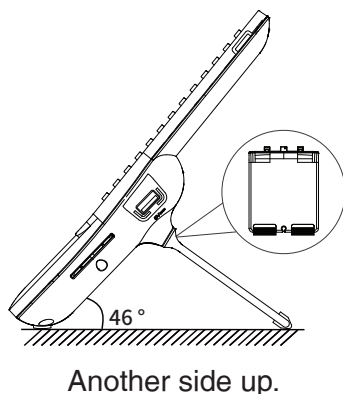
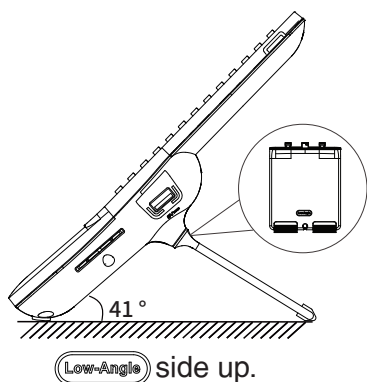
But if you use more than one expansion module, you need to connect an additional Yealink power adapter (5V/2A) to any one of the expansion modules. The power adapter should be purchased separately.

## Assembling the EXP55

**Attach the stand, as shown below:**



The stand supports two installation angles: regular and reverse.



## Basic Configurations

The EXP55 supports 78 DSS keys in three screen pages. Each page displays 26 DSS keys. You can press **1**, **2** or **3** to switch to the corresponding page and use your desired DSS key.

You can assign a feature to a DSS key via phone user interface. Press the desired DSS key of EXP55 for about 5 seconds, the phone LCD screen will prompt the setting of this key. The following sections provide you with detailed instruction of assigning some frequently used features to the DSS keys via web user interface.

### Conference

The conference key allows you to set up a conference with a third party when already in a call.

1. Click **Dsskey->Ext Key**.
2. In the desired DSS key field, select **Conference** from the pull-down list of **Type**.
3. Enter the phone number or extension of the destination party in the **Value** field.
4. (Optional.) Enter the string that will appear on the LCD screen in the **Label** field.
5. Click **Confirm** to accept the change.

### Forward

When there is an incoming call, you can press the forward key to forward the incoming call to the pre-defined destination number.

1. Click **Dsskey->Ext Key**.
2. In the desired DSS key field, select **Forward** from the pull-down list of **Type**.
3. Enter the destination number to forward the incoming calls to in the **Value** field.
4. (Optional.) Enter the string that will appear on the LCD screen in the **Label** field.
5. Click **Confirm** to accept the change.

---

## Transfer

You can press the transfer key to perform a Blind/Semi-Attended/Attended transfer during a call.

1. Click **Dsskey->Ext Key**.
2. In the desired DSS key field, select **Transfer** from the pull-down list of **Type**.
3. Enter the phone number you want to transfer the call to in the **Value** field.
4. (Optional.) Enter the string that will appear on the LCD screen in the **Label** field.
5. Click **Confirm** to accept the change.

## Hold

You can press the hold key to hold and retrieve a call.

1. Click **Dsskey->Ext Key**.
2. In the desired DSS key field, select **Hold** from the pull-down list of **Type**.
3. (Optional.) Enter the string that will appear on the LCD screen in the **Label** field.
4. Click **Confirm** to accept the change.

## DND

You can press the DND key when the phone is idle to activate or deactivate the DND mode.

1. Click **Dsskey->Ext Key**.
2. In the desired DSS key field, select **DND** from the pull-down list of **Type**.
3. (Optional.) Enter the string that will appear on the LCD screen in the **Label** field.
4. Click **Confirm** to accept the change.

## ReCall

You can place a call back to the caller of the last incoming call by pressing the ReCall key.

1. Click **Dsskey->Ext Key**.
2. In the desired DSS key field, select **Recall** from the pull-down list of **Type**.
3. (Optional.) Enter the string that will appear on the LCD screen in the **Label** field.
4. Click **Confirm** to accept the change.

## SMS

You can access the SMS more quickly and easily by pressing the SMS key.

1. Click **Dsskey->Ext Key**.
2. In the desired DSS key field, select **SMS** from the pull-down list of **Type**.
3. (Optional.) Enter the string that will appear on the LCD screen in the **Label** field.
4. Click **Confirm** to accept the change.

## Direct Pickup

If you press the direct pickup key when the specific phone number receives an incoming call, the call is answered on your phone.

1. Click **Dsskey->Ext Key**.
2. In the desired DSS key field, select **Pickup** from the pull-down list of **Type**.
3. Enter the direct call pickup code followed by the specific number that you want to pick up a call from in the **Value** field.

- 
4. (Optional.) Enter the string that will appear on the LCD screen in the **Label** field.
  5. Select the desired line from the pull-down list of **Line**.
  6. Click **Confirm** to accept the change.

## Group Pickup

You can pick up the incoming call of the pre-defined group by pressing the group pickup key.

1. Click **Dsskey->Ext Key**.
2. In the desired DSS key field, select **Group Pickup** from the pull-down list of **Type**.
3. Enter the group call pickup code in the **Value** field.
4. (Optional.) Enter the string that will appear on the LCD screen in the **Label** field.
5. Select the desired line from the pull-down list of **Line**.
6. Click **Confirm** to accept the change.

## Call Park

You can park a call at an extension by pressing the call park key. The current call is put on hold and can be retrieved on another IP phone.

1. Click **Dsskey->Ext Key**.
2. In the desired DSS key field, select **Call Park** from the pull-down list of **Type**.
3. Enter the call park code in the **Value** field.
4. (Optional.) Enter the string that will appear on the LCD screen in the **Label** field.
5. Select the desired line from the pull-down list of **Line**.
6. Click **Confirm** to accept the change.

## Voice Mail

You can access the voice mail more quickly by pressing the voice mail key.

1. Click **Dsskey->Ext Key**.
2. In the desired DSS key field, select **Voice Mail** from the pull-down list of **Type**.
3. Enter the voice mail access code in the **Value** field.
4. (Optional.) Enter the string that will appear on the LCD screen in the **Label** field.
5. Select the desired line from the pull-down list of **Line**.
6. Click **Confirm** to accept the change.

## Speed Dial

You can speed up dialing the numbers which are frequently used or hard to remember by pressing the speed dial key.

1. Click **Dsskey->Ext Key**.
2. In the desired DSS key field, select **SpeedDial** from the pull-down list of **Type**.
3. Enter the desired number you want to dial out directly in the **Value** field.
4. (Optional.) Enter the string that will appear on the LCD screen in the **Label** field.
5. Select the desired line from the pull-down list of **Line**.
6. Click **Confirm** to accept the change.

---

## Intercom

You can connect to the operator or the secretary more quickly by pressing the intercom key in an office environment .

1. Click **Dsskey->Ext Key**.
2. In the desired DSS key field, select **Intercom** from the pull-down list of **Type**.
3. Enter the remote extension number in the **Value** field.
4. (Optional.) Enter the string that will appear on the LCD screen in the **Label** field.
5. Select the desired line from the pull-down list of **Line**.
6. Click **Confirm** to accept the change.

## Line

You can configure a DSS key as the line key. It performs the same as a hard line key.

1. Click **Dsskey->Ext Key**.
2. In the desired DSS key field, select **Line** from the pull-down list of **Type**.
3. (Optional.) Enter the string that will appear on the LCD screen in the **Label** field.
4. Select the desired line from the pull-down list of **Line**.
5. Click **Confirm** to accept the change.

## BLF

The BLF key allows you to monitor the status of the pre-defined number. You can also pick up incoming calls of the monitored number.

1. Click **Dsskey->Ext Key**.
2. In the desired DSS key field, select **BLF** from the pull-down list of **Type**.
3. Enter the phone number or extension you want to monitor in the **Value** field.
4. (Optional.) Enter the string that will appear on the LCD screen in the **Label** field.
5. Select the desired line from the pull-down list of **Line**.
6. Enter the directed call pickup code in the **Extension** field.
7. Click **Confirm** to accept the change.

## Group Listening

You can configure a DSS key as the group listening key. Then you are allowed to activate the Speakerphone and Handset/Headset at the same time by pressing the group listening key.

1. Click **Dsskey->Ext Key**.
2. In the desired DSS key field, select **Group Listening** from the pull-down list of **Type**.
3. (Optional.) Enter the string that will appear on the LCD screen in the **Label** field.
4. Click **Confirm** to accept the change.

### Technical Support

Visit Yealink Wiki (<http://support.yealink.com/>) for the latest firmware, guides, FAQ, Product documents, and more. For better service, we sincerely recommend you to use Yealink Ticketing system (<https://ticket.yealink.com>) to submit all your technical issues.



430104002949



YEALINK(XIAMEN) NETWORK TECHNOLOGY CO.,LTD.  
Web: [www.yealink.com](http://www.yealink.com)  
Copyright©2024 YEALINK(XIAMEN) NETWORK  
TECHNOLOGY CO.,LTD.All rights reserved.